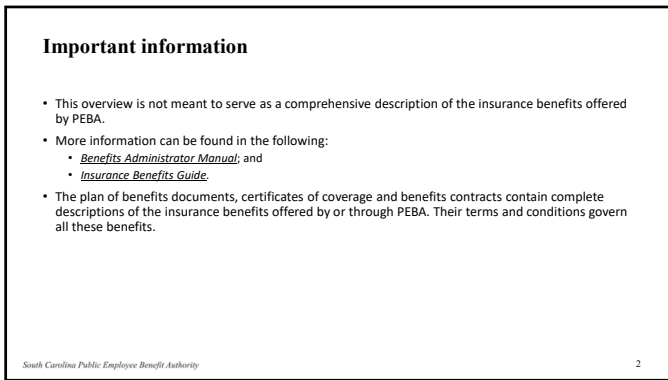
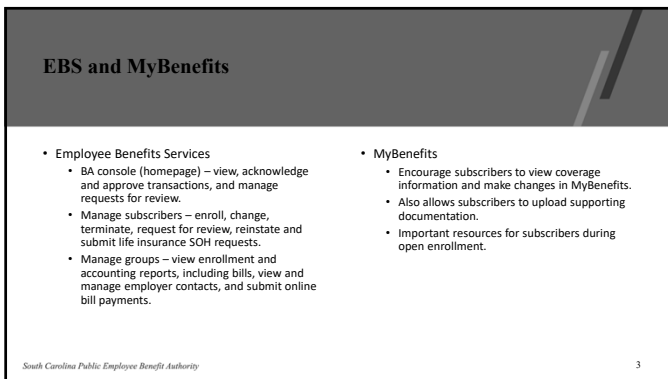


1



2



3

Additional training

- For training resources, visit peba.sc.gov/insurance-training.
 - Insurance enrollments with EBS.
 - EBS Enrollment Transaction Guide.
 - EBS Enrollment File Upload Guide.
 - Request for Review tutorial.
 - Updating salary information for SLTD.
 - Duo Security.
 - Long term disability claims.
 - Electronic life insurance *Statement of Health* process.
 - National Medical Support Notice.
- Join online sessions and the Employer Advisory Group, hosted by Employer Services, which are announced in *PEBA Update*.

South Carolina Public Employee Benefit Authority

4

4

Other tools

- Forms available at peba.sc.gov/forms.
- Employer checklists available at peba.sc.gov/publications.
- Important employer publications at peba.sc.gov/publications.
- *Navigating Your Benefits* series available at peba.sc.gov/nyb.
- Information for new employees at peba.sc.gov/new-employees.

South Carolina Public Employee Benefit Authority

5

5

Get in touch with PEBA


- Customer Service.
 - Use the Contact Us button in EBS; or
 - Email at peba.sc.gov/contact-employer.
- *PEBA Update* weekly e-newsletter.
 - Employer contacts in EBS with a valid email address will be placed on the distribution list.
 - View archives at peba.sc.gov/peba-update.
- Email EmployerServices@peba.sc.gov to request training assistance and share your feedback.


South Carolina Public Employee Benefit Authority


6


6

Connect with PEBA

 [SCPEBA](#)

 [PEBA TV](#)

 [SCPEBA](#)

 [South Carolina Public Employee Benefit Authority](#)

 [s.c.peba](#)

South Carolina Public Employee Benefit Authority

7

Disclaimer

This presentation does not constitute a comprehensive or binding representation of the employee benefit programs PEBA administers. The terms and conditions of the employee benefit programs PEBA administers are set out in the applicable statutes and plan documents and are subject to change. Benefits administrators and others chosen by your employer to assist you with your participation in these employee benefit programs are not agents or employees of PEBA and are not authorized to bind PEBA or make representations on behalf of PEBA. Please contact PEBA for the most current information. The language used in this presentation does not create any contractual rights or entitlements for any person.

South Carolina Public Employee Benefit Authority

8
