

1

---

---

---

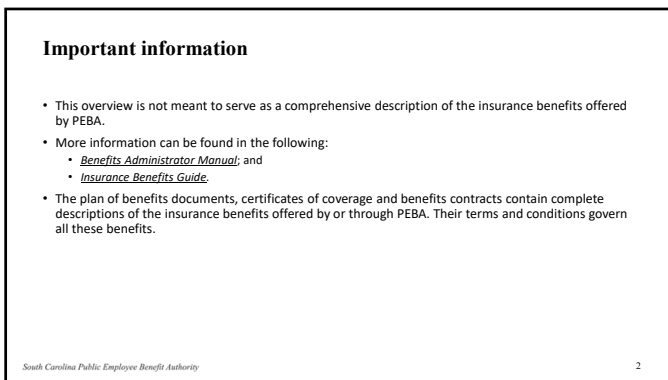
---

---

---

---

---



2

---

---

---

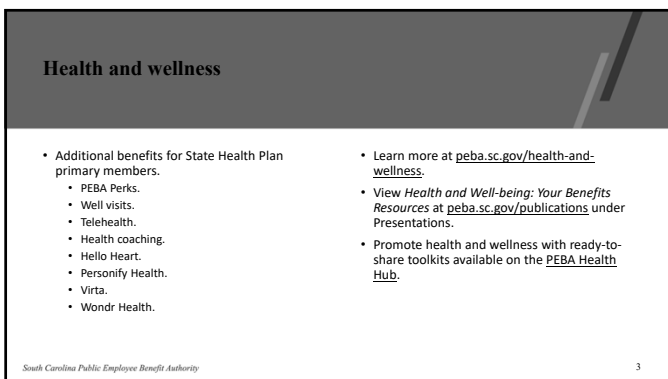
---

---

---

---

---



3

---

---

---

---

---

---

---

---

### Online tools and resources

- MyBenefits.
- My Health Toolkit.
- Caremark online and mobile app.
- Membership ID cards.
- Member messaging.
- Treatment Cost Estimator.
- Member discounts.
- Find ready-to-share toolkits on the [PEBA Health Hub](#).

South Carolina Public Employee Benefit Authority

4

---

---

---

---

---

---

---

---

### Disclaimer

This presentation does not constitute a comprehensive or binding representation of the employee benefit programs PEBA administers. The terms and conditions of the employee benefit programs PEBA administers are set out in the applicable statutes and plan documents and are subject to change. Benefits administrators and others chosen by your employer to assist you with your participation in these employee benefit programs are not agents or employees of PEBA and are not authorized to bind PEBA or make representations on behalf of PEBA. Please contact PEBA for the most current information. The language used in this presentation does not create any contractual rights or entitlements for any person.

South Carolina Public Employee Benefit Authority

5

---

---

---

---

---

---

---

---