

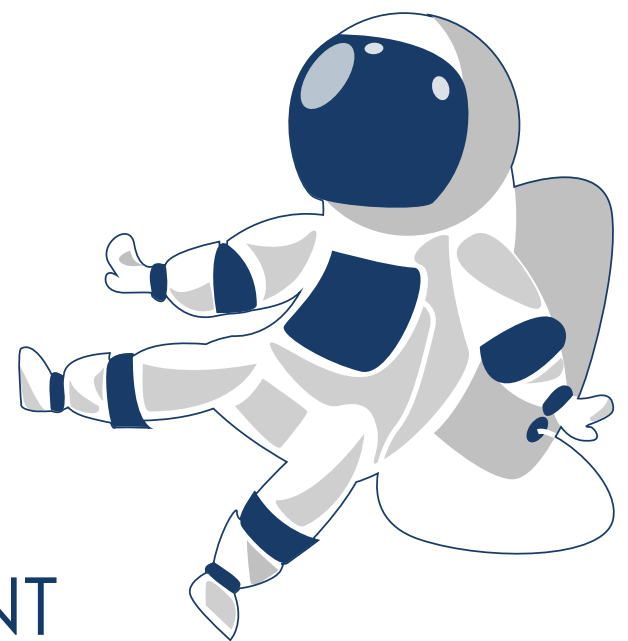
EXPLORE

YOUR BENEFITS

OPEN ENROLLMENT 2022

REVIEW YOUR CURRENT COVERAGE AND
MAKE CHANGES TO YOUR 2023 COVERAGE.

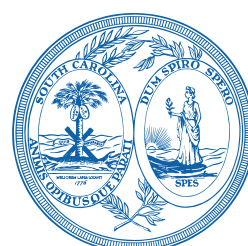
- HEALTH
- VISION
- LIFE INSURANCE
- LONG TERM DISABILITY
- MONEYPLUS
- HEALTH SAVINGS ACCOUNT



LOG IN TO MYBENEFITS OCTOBER 1-31, 2022.

VISIT **PEBA.SC.GOV/OE** FOR DETAILS.

Changes to existing dental coverage can be made only during open enrollment in odd-numbered years. Your next opportunity to add or drop dental coverage will be in October 2023.



PEBASM
SC Retirement Systems
and State Health Plan